

# NEWS LETTER



## Health Beyond Research & Innovation Showcase 2019

JUNE 5 & 6, 2019

THE WILLIAM INGLIS - MGALLERY BY SOFITEL  
155 GOVERNOR MACQUARIE DR WARWICK FARM NSW



Amazing research aimed  
at saving lives

Cutting-edge technology  
leads new treatments

Keynote speakers with  
international reputations

Next generation of  
researchers

## Health Beyond Research & Innovation Showcase 2019 UPDATE

More than 1000 people descended on the William Inglis Hotel on 5 and 6 June 2019 to listen to a myriad of presentations ranging from cannabinoid use in the treatment of chronic pain to building healthy airports.

In its 14th year, the **Health Beyond Research and Innovation Showcase 2019** pledged to be bigger and better than ever before, and with over 100 presentations including eight keynote speakers, the showcase definitely lived up to its promise.

Kicking off the keynote presentations on day one was **Professor Iain McGregor**, Academic Director, Lambert Initiative, University of Sydney, who immersed participants into the world of medicinal cannabis use for a range of conditions including childhood epilepsy as well as in the reduction of insomnia.

The theme was continued with **Professor Paul Glare**, University of Sydney, who provided food for thought into cannabinoid use for chronic pain. "More than 100,000 people in the community self-medicate with illicit cannabis," Professor Glare explained, justifying the importance of medicinal cannabis research.

**Professor Meera Agar**, Clinical Trials Director, South Western Sydney Local Health District, followed with her presentation on cannabinoid clinical trials

Continue on page 3

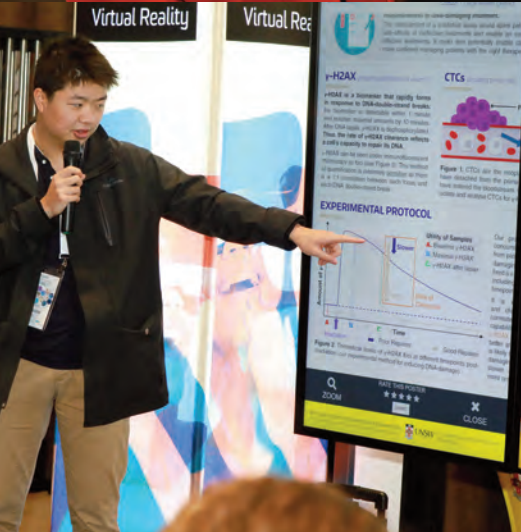


Health  
South Western Sydney  
Local Health District



Ingham Institute  
Applied Medical Research







to improve appetite in palliative care patients. Driven to provide a high standard of care, Professor Agar noted the importance of research, "We have one chance to get it right in clinical trials in palliative care."

Concurrent sessions and workshops on the first day offered participants a broad range of topics across disciplines including mental health, allied health, cancer, discovery research and innovation, drug and alcohol, nursing and midwifery.

Participants learnt about microbiome dynamics in inflammatory bowel diseases, were walked through physiotherapy-led interventions research and discovered fascinating information about a new bank that stores, not money, but blood clots!

The heavy rain and cold conditions did nothing to dampen the spirits of participants who mingled with their colleagues during morning tea, lunch and at the networking session, enjoying delicious food and an assortment of drinks.

With day one deemed a success, expectations were high for day two and, once again, participants were not disappointed. A new range of topics based on the idea of designing cities, airports and health precincts challenged participants to look beyond the traditional notions of health.

Delving into issues of mental health, Chair of the National Mental Health Commission, **Ms Lucy Brogden**, explored the topic of disease prevention through city planning with a focus on sustainable cities and communities, while **Professor Evelyn De Leeuw**, Director of CHETRE, made credible the idea of building a healthy airport. However, she noted that such an airport required extensive planning and should be "responsive to the unique character and composition of the people and communities that live around and engage with the airport."

**Professor Donald McNeill**, Professor of Urban and Cultural Geography at Western Sydney University, continued the theme with his talk on health innovation precincts providing insights into the future of Liverpool as such a precinct.

View the official Highlights video and photo gallery at [www.healthbeyondshowcase.org.au](http://www.healthbeyondshowcase.org.au)

Authored by Linda Music, Communications Officer, South West Sydney Research

With Olympian **Jana Pittman**'s entry onto the stage, participants were invited to become world champion athletes themselves. Through her clever use of storytelling and visualisation as well as a narrated virtual ride on a bobsled, the audience got to experience the emotion, the joy and the pain that is Jana's life-story.

Just like the first day, participants had a plethora of options to choose from in the concurrent sessions and workshops. A broad spectrum of disciplines was once again represented with information on both clinical research and community-based research on offer.

The last keynote speaker of the day, **Dr Alice Motion**, Chemist and Science Communicator, based at the University of Sydney, shared her program which involves teaching "young people to make molecules that matter." With her work with young people, Dr Motion was an excellent choice to present the winners of the Ingham Institute Applied Medical Research's Schools Science Poster Competition.

Students dazzled the audience with presentations of their scientific research ranging from an investigation into the efficacy of essential oils in killing bacteria to an in-depth physics and mathematical exploration of the photoelectric effect. Congratulations to Hannah Penfold, Patrick Cushway, Conrad Petrovic, Neha Singh and Rania Aziz who, no doubt, have a promising future in scientific research.

The 2019 showcase was more than just a series of presentations. Indeed, the showcase was an exploration of the great scientific minds that make up our local health district and its success is testament to the hard work of **SWSLHD** and the **Ingham Institute**.

Next year's showcase has been confirmed for the **3rd and 4th June 2020**, so please SAVE THE DATE! More information about this and next year's events will be posted on the website soon. In the meantime, if you attended the showcase this year and have not yet provided your valuable feedback, please do so online for day one and day two.





**PROFESSOR  
IAIN MCGREGOR**

MA, PhD



**PROFESSOR  
PAUL GLARE**

MBBS, FRACP, FFPM ANZCA, FACHPM  
RACP, MA Applied Ethics (Healthcare),  
MMed (Clin Epidemiol)



**PROFESSOR  
MEERA AGAR**

Palliative Medicine, IMPACCT



**MS LUCY BROGDEN**

B.Comm., M.Psych.



**PROFESSOR  
EVELYNE DE LEEUW**

MSc. MPH PhD



**PROFESSOR  
DONALD MCNEILL**

MA Politics (Hons) MCD PhD



**DR ALICE MOTION**

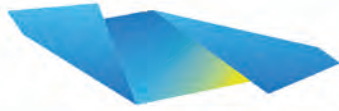
Chemist and Science  
Communicator



**MS JANA PITTMAN**

Olympian, TV Presenter,  
Medical Student





# Ingham Institute

Applied Medical Research

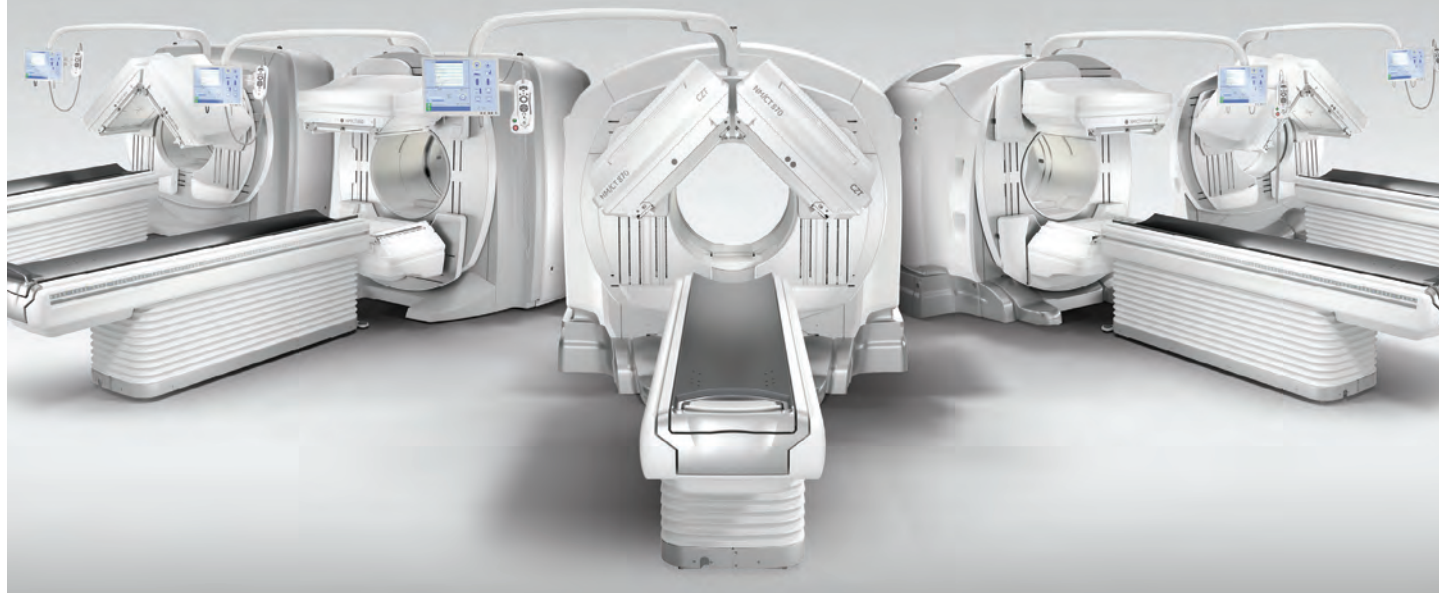


- » **Cancer Research**  
Including patient support programs and world-first technologies
- » **Clinical Sciences Research**  
Comprising of Cardiovascular Disease, Diabetes, Infectious & Inflammatory Diseases
- » **Population, Community & Health Services Research**  
Focusing on patient safety and community health programs
- » **Injury & Rehabilitation Research**  
Improving outcomes for musculo-skeletal disorders and brain injuries
- » **Mental Health Research**  
Treating childhood psychiatry and developmental disorders
- » **Clinical Trials**  
Over 20 dedicated teams coordinating clinical trials across South West Sydney



WANT TO REDUCE INJECTED DOSE BY UP TO 25%?<sup>1</sup>

It's now possible with the new 800 Series



Introducing the 800 Series. The new family of five nuclear medicine systems puts into practice everything we've learned over the course of 20 years by bringing the latest in SPECT/CT advancements to a wider range of clinical environments.

The 800 Series includes a collection of SPECT enhancements like SwiftScan Planar and SwiftScan SPECT that can increase sensitivity and enable reduction of scan times or injected dose by as much as 25 percent, without a loss in signal-to-noise ratio.<sup>1</sup>

[gehealthcare.com.au](http://gehealthcare.com.au)

<sup>1</sup> Compared to LEHR collimator, with Step & Shoot scan mode (for SPECT) / without Clarity 2D (for Planar).

As demonstrated in phantom testing using a bone scan protocol, Evolution processing (for SPECT), and a model observer. Because model observer results may not always match those from a human reader, the actual time/dose reduction depends on the clinical task, patient size, anatomical location and clinical practice. A radiologist should determine the appropriate scan time/dose for the particular clinical task.



# TOGETHER WE CAN IMPROVE PATIENT OUTCOMES

Through innovation and collaboration, we continue to improve the lives and health of millions of people each year.



**REAL-TIME FEEDBACK IN  
THE PALM OF YOUR HAND.**



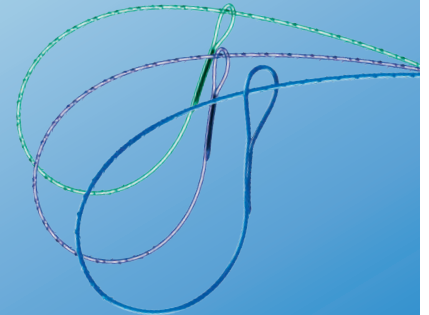
**Signia™**  
Smart Stapler

**BENEFITS STICK.  
TISSUE DOESN'T.**



**LigaSure™ Maryland**  
Jaw Device with Nano-Coated Jaws

**SECURE. FAST. EFFECTIVE.**



**V-Loc™**  
Wound Closure Device

**LAPAROSCOPIC & OPEN  
VENTRAL REPAIR**



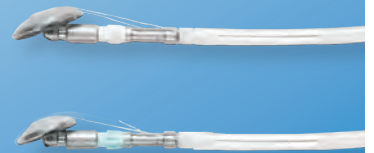
**Symbotex™**  
Composite Mesh

**PERFORMANCE  
YOU CAN SEE**



**Clearify™**  
Visualisation System

**CONSISTENT  
PERFORMANCE  
IN STAPLE  
FORMATION.**



**Orvil™**  
Trans-Oral Circular Stapler Anvil

Medtronic Australasia Pty Ltd  
2 Alma Road  
Macquarie Park, NSW 2113  
Australia  
Tel: +61 2 9857 9000  
Fax: +61 2 9889 5167  
Toll Free: 1800 668 670

Medtronic New Zealand Ltd  
Level 3 - Building 5, Central Park Corporate Centre  
666 Great South Road  
Penrose, Auckland 1051  
New Zealand  
Fax: +64 9 918 3742  
Toll Free: 0800 377 807

[medtronic.com.au](http://medtronic.com.au)  
[medtronic.co.nz](http://medtronic.co.nz)

© Medtronic 2019 All Rights Reserved. EM 1008-09-18 ANZ. #5029-062018

**Medtronic**

# DOING RESEARCH *differently*

Through our university-wide affiliations, our researchers are producing world-leading research in the fields of:

- Cancer;
- Neuroscience, Mental Health and Addiction;
- Infectious Disease, Immunity and Inflammation; and
- Non-Communicable Diseases.

This four theme approach to research is inclusive, promoting the links between academics and clinicians, across disciplines and across faculties.

## BECOMING A CONJOINT

Awarding of conjoint status carries official recognition of this role by the Faculty, offers certain privileges and allows inclusion of these individuals into the academic community of UNSW Medicine.

Conjoint appointees are individuals who generally hold a relevant position external to UNSW, who have contributed to the research and/or teaching effort of UNSW Medicine. Conjoint appointments are unpaid positions.

For more information on becoming a conjoint appointee, contact the South Western Sydney Clinical School on **+61 2 8738 3844** or **download** an application form from:

[swsyd.info/conjoint](https://swsyd.info/conjoint)





WESTERN SYDNEY  
UNIVERSITY



# HEALTH & MEDICAL RESEARCH UNLIMITED.

Find out more about the work we  
are doing and our commitment  
to the health of our region.

[westernsydney.edu.au](http://westernsydney.edu.au)

Enterprise Services

# Your enabling Partner

Performance through partnership



One of the most promising ways to align the goals of improving outcomes at reduced costs is a close collaboration with an industry partner – such as Siemens Healthineers, providing services and solutions that gives healthcare providers access to the latest technology and helps them improve workflow and productivity.

While Siemens Healthineers take care of the technology management – from planning and installation to user training and maintenance – hospitals can concentrate on their core competency: providing excellent patient care.

**Get in touch with us** for more information about how Siemens Healthineers can of work with you or partner with you to ensure full operational efficiency of your medical technology fleet.

[siemens-healthineers.com/services/enterprise-service](https://siemens-healthineers.com/services/enterprise-service)



CareAdvantage | *Johnson & Johnson*  
FAMILY OF COMPANIES

## Introducing CareAdvantage

CareAdvantage is the value creation service of Johnson & Johnson. Our offer goes beyond the delivery of innovative medical technologies, to capabilities and services that underpin the triple aim of healthcare.

### Our Capabilities are:



#### Clinical Partnerships

- Infection Risk Management
- Professional Education
- Operating Procedure Standardisation



#### Patient Pathway & Engagement Capabilities

- Theatre Efficiency
- Digital Patient Engagement Platform
- Outcomes Measurement



#### Operational Efficiencies

- RFID
- Inventory Optimisation
- Supply Chain Optimisation



#### Commercial Capabilities

- Claims Review Service
- Quarterly Business Reviews
- Capital Funding

To learn more, please come visit us on the stand or email [careadvantageANZ@its.jnj.com](mailto:careadvantageANZ@its.jnj.com)





**KORTHOTICS**

[www.korthotics.com.au](http://www.korthotics.com.au)

Unit 45-46/575 Woodville Road  
Guildford NSW 2161  
(02) 8710 4183

Specialist in  
custom made  
orthoses

3D Printed  
Orthoses



I support the  
**ndis**

Registered  
NDIS Provider

For more information, contact: [enquiries@korthotics.com.au](mailto:enquiries@korthotics.com.au)

## ***The William Inglis Hotel*** *South West Sydney's only luxury hotel*

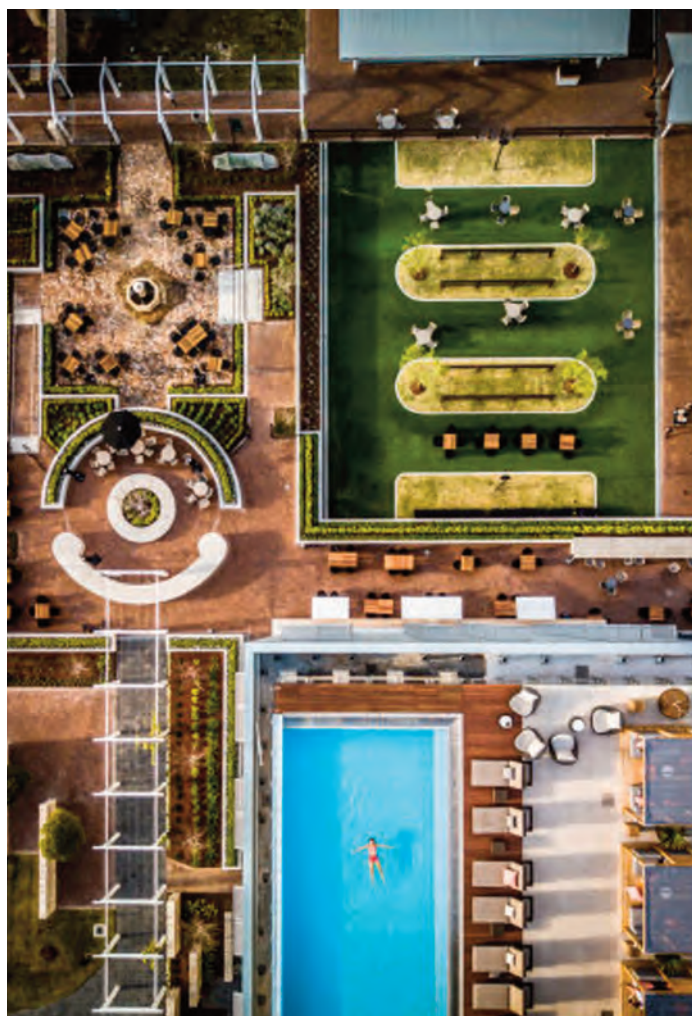
*MGallery by Sofitel's latest property is  
an equine themed hotel featuring a  
rooftop pool, Newmarket Restaurant  
serving paddock to plate style menu, 1867  
Whiskey bar, Heroic Cafe with 144  
luxurious accommodation rooms and  
bespoke event spaces.*

*Unforgettable moments are created  
at The William Inglis Hotel.*

Phone: (02) 8324 3460  
[www.williaminglis.com.au](http://www.williaminglis.com.au)



The  
William  
Inglis



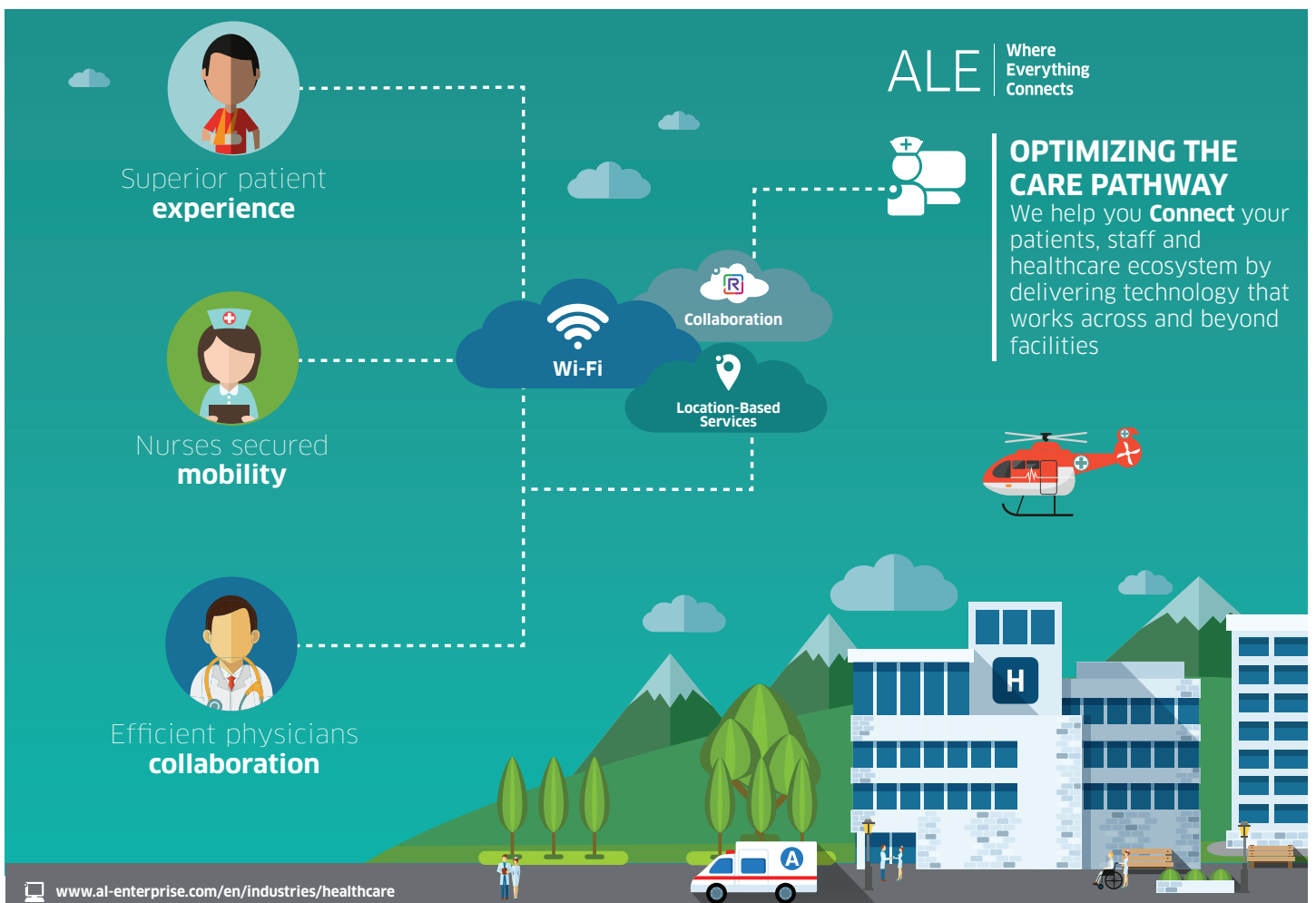
Our global reach provides local innovation,  
driven by you.



[www.hpaust.com](http://www.hpaust.com)



1300 HPAUST



ALE

Where  
Everything  
Connects

Superior patient  
**experience**

Nurses secured  
**mobility**

Efficient physicians  
**collaboration**

## OPTIMIZING THE CARE PATHWAY

We help you **Connect** your patients, staff and healthcare ecosystem by delivering technology that works across and beyond facilities



Introducing

# CorPath GRX

Precision Vascular Robotics

Corindus CorPath GRX is proudly distributed by LifeHealthcare.  
For more information please visit [www.corindus.com](http://www.corindus.com) or  
email [corindus@lifehealthcare.com.au](mailto:corindus@lifehealthcare.com.au)



**LifeHealthcare**  
Not your typical multinational

LifeHealthcare Distribution Pty Ltd  
Level 8, 15 Talavera Road, North Ryde NSW 2113  
T: 0400 865 399 E: [corindus@lifehealthcare.com.au](mailto:corindus@lifehealthcare.com.au)

**Corindus**  
Vascular Robotics



BROUGHT TO YOU BY

**LIVERPOOL  
CITY  
COUNCIL**

**WESTERN SYDNEY  
UNIVERSITY**



**Come and join the discussion as health visionaries debate how South West Sydney communities can be better connected to the burgeoning Innovation Precinct in Liverpool.**


---

**VITAL SIGNS** Meeting Liverpool's health challenges  
**DATE** Thursday, 27 June 2019  
**TIME** 5.30pm to 7.30pm  
**LOCATION** Level 9, Western Sydney University, Liverpool campus (next to Westfield Liverpool)  
**ADDRESS** 100 Macquarie Street, Liverpool NSW, 2170 (Park at Westfield Liverpool, then walk to WSU via Elizabeth Street. **Please do not rely on Google Maps**)

---

This event, brought to you by Liverpool City Council and Western Sydney University, is the third in a series of public discussions held in WSU's new CBD campus.





# THE LEXUS LS — SOUL IN EVERY DETAIL

THE EPITOME OF LEXUS CRAFTSMANSHIP — The Lexus LS leaves no detail overlooked. Featuring stunning Kiriko cut-glass panels and origami-inspired door pleats\*, this standard-setting luxury vehicle embodies unprecedented levels of Takumi craftsmanship.

Overseas model shown.

LEXUS OF MACARTHUR | 11-23 Lasso Rd, Gregory Hills  
PH 02 4660 0300 | [www.lexusofmacarthur.com.au](http://www.lexusofmacarthur.com.au) | MD058242

\*Available as optional extras, Kiriko cut-glass and origami-inspired door pleats are available in LS Sports Luxury variant only.



# THE X7



BAYERISCHE MOTOREN WERKE

The X7 has arrived and sets a new benchmark for SUV's. Its generous space, sleek design and unique panoramic cabin provide the ultimate sense of freedom from the first to the third row. Designed to elevate every moment of the journey, experience freedom like never before.

The X7. The space to be.

**Book a test drive at Macarthur BMW today.**

**Macarthur BMW** 10 Yarmouth Place, Narellan. Tel 02 4660 0200. [macarthurbmw.com.au](http://macarthurbmw.com.au) MD055943



# Thank you to our 2019 Showcase Sponsors





# Health Beyond Research & Innovation Showcase 2019



PLATINUM SPONSORS



# Medtronic



PLATINUM PARTNERS &  
NETWORKING SPONSORS



**UNSW**  
SYDNEY

**WESTERN SYDNEY**  
UNIVERSITY



GOLD PARTNERS

**LIVERPOOL**  
**CITY**  
**COUNCIL**



**SOUTH WEST SYDNEY**  
**RESEARCH**

GOLD SPONSORS

*Johnson & Johnson*

MEDICAL DEVICES COMPANIES





## SILVER SPONSORS

Clintons Toyota



Macarthur BMW



LEXUS

MACARTHUR



**Tunstall**



UNIVERSITY  
OF WOLLONGONG  
AUSTRALIA

## BRONZE SPONSORS

**Deloitte.**



**FRESENIUS  
MEDICAL CARE**

**Marubeni**



Health Beyond  
Research Innovation  
Showcase  
2020

SAVE THE  
**DATE**  
JUNE 3 & 4  
**2020**

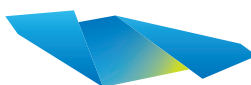
Dedicated to discovery,  
committed to care

2020

# Health Beyond Research & Innovation Showcase 2019



Health  
South Western Sydney  
Local Health District



Ingham Institute  
Applied Medical Research

[healthbeyondshowcase.org.au](http://healthbeyondshowcase.org.au)